



# WATER HAMMER ARRESTOR

## BRASS WATER HAMMER ARRESTOR

Model Number: **MV130-5L**

### FEATURES / CHARACTERISTICS

Rating 250psi  
Connection BSPT Threaded  
Working Medium Water

Copper Body, Piston Type  
Brass Threaded Ends

### ON REQUEST

NPT Threads (subject to minimum order quantities)

### HYDROSTATIC TEST PRESSURE

Shell- 8 bar  
Seat- 8 bar

### WORKING TEMPERATURE

Max Working Temperature: 250°F

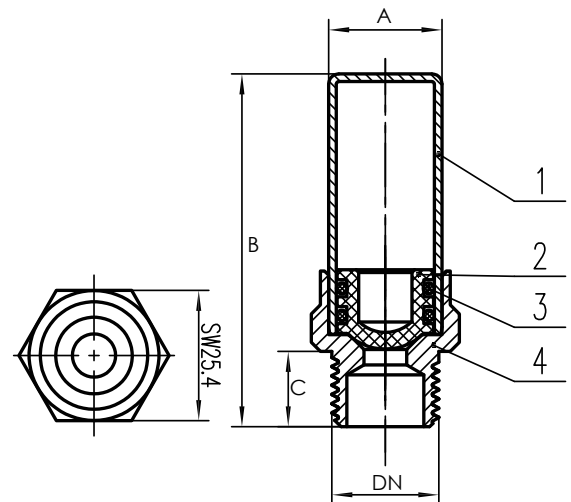
### MATERIAL SPECIFICATIONS

	PARTS	MATERIAL
1	Copper Pipe	Copper
2	Piston	Glass Fiber
3	O-Ring	EPDM
4	Adapter	Brass

### DIMENSIONS (mm)

Size		A	B	C	Fixture Units
DN	inch				
15	1/2"	22.13	95	14.5	1-3
20	3/4"	22.13	95	14.5	1-3

\*All dimensions are nominal (indicative)  
Actual dimensions may vary



Fixture	Type of supply control	Weight in Fixture - Units					
		Public			Private		
		Total	C.W	H.W	Total	C.W	H.W
Water Closet	Flush Valve	8	8	-	5	5	-
Water Closet	Flush Tank	5	5	-	2.5	2.5	-
Pedestal Urinal	Flush Valve	4	4	-	-	-	-
Stall or Wall Urinal	Flush Valve	4	4	-	-	-	-
Stall or Wall Urinal	Flush Tank	2	2	-	-	-	-
Lavatory	Faucet	2	1 1/2	1 1/2	1	1	1
Bathtub	Faucet	4	2	3	2	1 1/2	1 1/2
Shower head	Mixing Valve	4	2	3	2	1	2
Bathroom Group	Flush Valve Closet	-	-	-	8	8	3
Bathroom Group	Flush Tank closet	-	-	-	6	6	3
Seperate Shower	Mixing Valve	-	-	-	2	1	2
Service Sink	Faucet	3	3	3	-	-	-
Laundry Tubs	Faucet	-	-	-	3	3	3
Combination	Faucet	-	-	-	3	3	3
Clothes washer	Solenoid Valves	-	-	-	4	3	3
Dishwasher	Solenoid Valves	-	-	-	1.5	-	1.5
Ice Maker	Solenoid Valves	-	-	-	1	1	-