



BALL VALVE

BRONZE BALL VALVE WITH Y-STRAINER, PN25

Model Number: **MV10-1128Y**

FEATURES / CHARACTERISTICS

Rating	PN25
Connections	BS EN 10226-2
	Taper Threaded (ex BS21)
Working Medium	Water, Oil and Steam

SS304 Screen
Full Bore, Chrome Plated Ball, Screwed Cap.

ON REQUEST

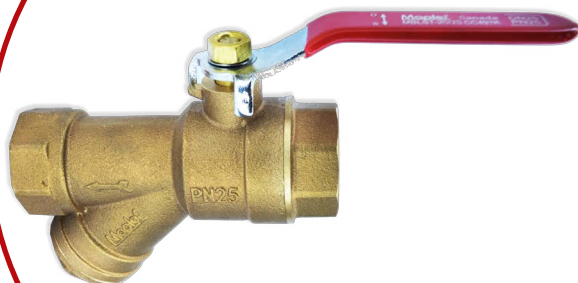
NPT Threads, (subject to minimum order quantities)

HYDROSTATIC TEST PRESSURE

Shell- 37.5 bar
Seat- 27.5 bar

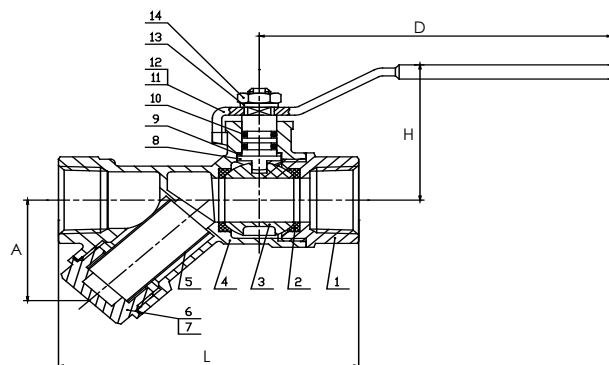
WORKING TEMPERATURE

25 Bar -10° C to 110° C water



MATERIAL SPECIFICATIONS

SR.	PARTS	MATERIAL
1	Seat Retainer	Bronze
2	Seat	PTFE
3	Ball	Brass CW617N
4	Body	Bronze CC491K
5	Screen	Stainless Steel 304
6	Gasket	PTFE
7	Cap	Bronze CC491K
8	Stem	Brass CW617N
9	Stem Gasket	PTFE
10	O-Ring	NBR
11	Lever	Mild Steel
12	Lever Cover	PVC
13	Gasket	Stainless Steel 304
14	Lever Nut	Brass



DIMENSIONS (mm)

Sizes		D	L	H	A
DN	inch				
15	½"	95	80	44	33
20	¾"	95	92	47	38
25	1"	110	112	55	46
32	1¼"	140	140	65	55

*All dimensions are nominal (indicative)
Actual dimensions may vary