

Model: **MV30-311GG-365**

Swing Check Valve

Resilient Seated-Grooved Ends



FEATURES / CHARACTERISTICS

| | |
|--------------|--------------------------------------|
| Rating | 365PSI |
| Connections | AWWA C 606 |
| Applications | Fire protection, potable water, etc. |

Horizontal Swing, Renewable Seat and Disc, Fusion bonded coating comply with AWWA C550, Can be installed horizontally or vertically (with upward flow), Convenient to install and maintain, Low pressure drop

ON REQUEST

Other Pressure Ratings (subject to minimum order quantities)

MAXIMUM OPERATING PRESSURE

365 PSI (25.16 bar)

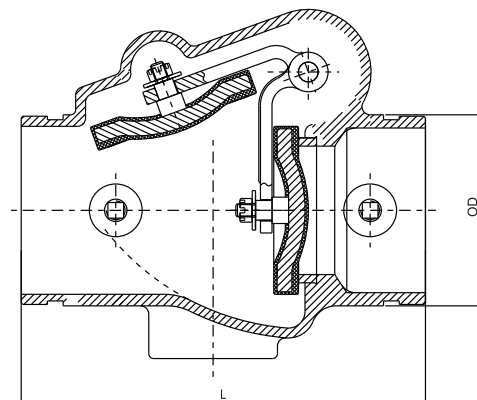
WORKING TEMPERATURE

32°F to 180°F (0°C to 82°C)



MATERIAL SPECIFICATIONS

| PARTS | MATERIAL | SPECIFICATION |
|-------------------------|-----------------|--------------------|
| Body | Ductile Iron | ASTM A536 65-45-12 |
| Seat | Bronze | ASTM B62 C83600 |
| Clapper | Q235+SS304+EPDM | |
| Clapper Arm | Stainless Steel | ASTM A351 CF8 |
| Washer | Stainless Steel | AISI 304 |
| Hexagonal Slot Thin Nut | Stainless Steel | AISI 304 |
| Split Pin | Stainless Steel | AISI 304 |



DIMENSIONS(mm)

| SIZE | | L | OD |
|------|------|-----|--------|
| mm | inch | | |
| 50 | 2" | 169 | 60.3 |
| 65 | 2½" | 203 | 73 |
| 80 | 3" | 213 | 88.9 |
| 100 | 4" | 245 | 114.3 |
| 125 | 5" | 267 | 139.7 |
| 150 | 6" | 292 | 165.1 |
| 200 | 8" | 356 | 219.1 |
| 250 | 10" | 432 | 273 |
| 300 | 12" | 495 | 323.85 |

*All dimensions are nominal (indicative)
Actual dimensions may vary