

Model: **MV20-MG20GG-175**

Butterfly Valve

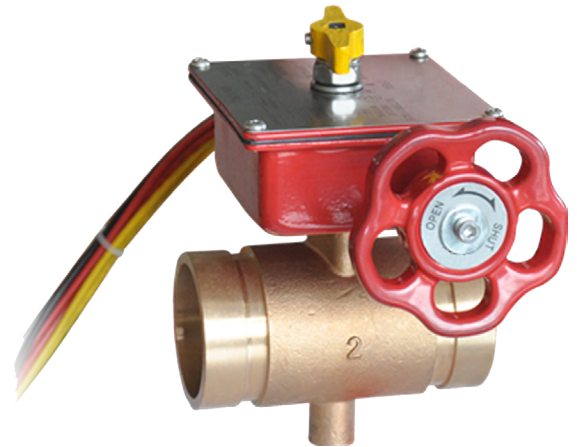
Resilient Seated Grooved Ends



FEATURES / CHARACTERISTICS

Rating	175 PSI
Connections	AWWA C606
Applications	Fire protection, potable water, etc.

Fusion bonded coating comply with AWWA C550



ON REQUEST

Other Pressure Ratings (subject to minimum order quantities)

MAXIMUM OPERATING PRESSURE

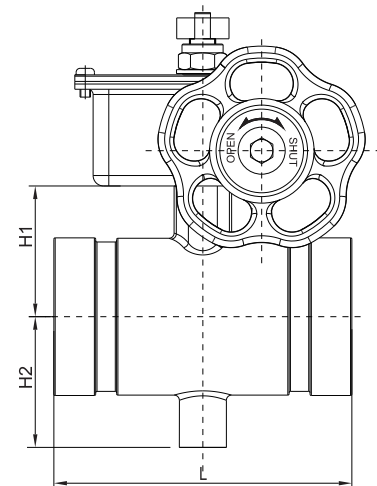
175 PSI (12.06 bar)

WORKING TEMPERATURE

32°F to 180°F (0°C to 82°C)

MATERIAL SPECIFICATIONS

PARTS	MATERIAL	SPECIFICATION
Body	Ductile Iron	ASTM A536 65-45-12
Disc	Steel+EPDM	ASTM 1045+EPDM
Upper Shaft	Stainless Steel	SS630
Lower Shaft	Stainless Steel	SS630
O-Ring	EPDM	
Gasket	Stainless Steel	AISI 304



DIMENSIONS(mm)

SIZE		H1	H2	L
mm	inch			
50	2"	50	50	114
65	2½"	55.5	55.5	114

*All dimensions are nominal (indicative)
Actual dimensions may vary

Factory installed UL listed double Tamper
Switches For indoor and Outdoor Use.