

# Model: **MV20-MG20G-175**

## Butterfly Valve

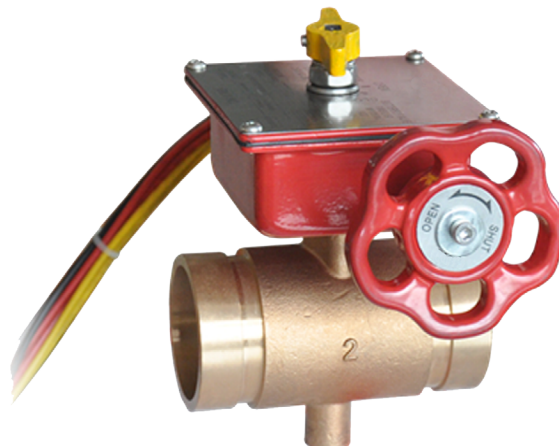
### Resilient Seated Grooved Ends



#### FEATURES / CHARACTERISTICS

Rating	175 PSI
Connections	AWWA C606
Applications	Fire protection, potable water, etc.

Fusion bonded coating comply with AWWA C550



#### ON REQUEST

Other Pressure Ratings (subject to minimum order quantities)

#### MAXIMUM OPERATING PRESSURE

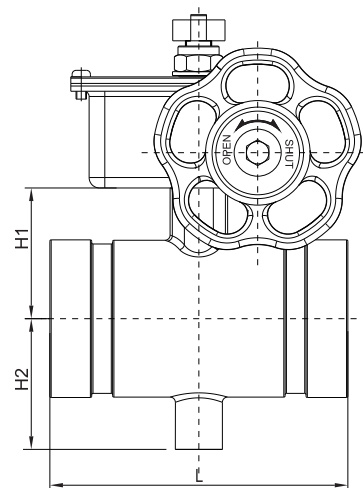
175 PSI (12.06 bar)

#### WORKING TEMPERATURE

32°F to 180°F (0°C to 82°C)

#### MATERIAL SPECIFICATIONS

PARTS	MATERIAL	SPECIFICATION
Body	Bronze	ASTM B62 C83600
Disc	Steel+EPDM	ASTM 1045+EPDM
Upper Shaft	Stainless Steel	SS630
Lower Shaft	Stainless Steel	SS630
O-Ring	EPDM	
Gasket	Stainless Steel	AISI 304



#### DIMENSIONS(mm)

SIZE		H1	H2	L
mm	inch			
50	2"	50	50	114
65	2½"	55.5	55.5	114

\*All dimensions are nominal (indicative)  
Actual dimensions may vary

Factory installed UL listed double Tamper  
Switches For indoor and Outdoor Use.